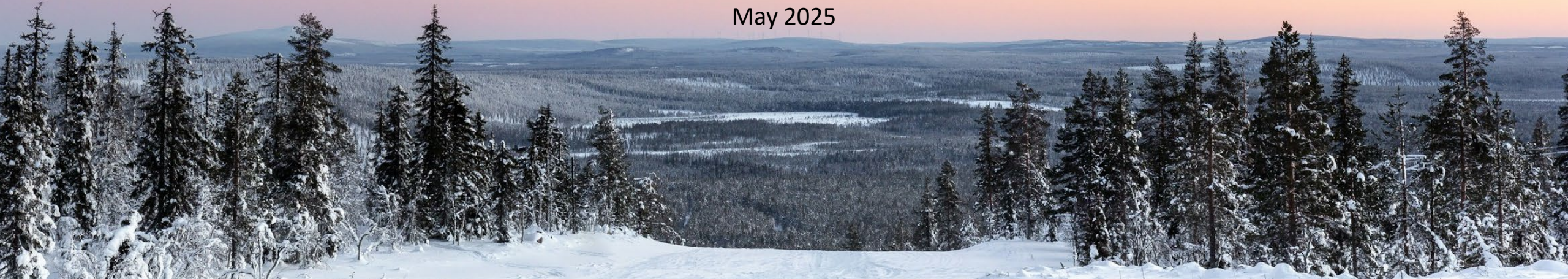




Advancing High-Potential Gold Opportunities

May 2025



Cautionary Notes

This corporate presentation (the "Presentation") of Nordique Resources Inc (the "Company") is current as of May 2025, except as otherwise provided herein. It is information in a summary form and does not purport to be complete. It is not intended to be relied upon as advice to investors or potential investors and does not take into account the investment objectives, financial situation or needs of any particular investor. An investment in the Company is speculative and involves substantial risk and is only suitable for investors that are able to bear the risk of losing their entire investment.

No representation or warranty, express or implied, is made or given by or on behalf of the Company or any of its affiliates, directors, officers or employees as to the accuracy, completeness or fairness of the information or opinions contained in this Presentation and no responsibility or liability is accepted by any person for such information or opinions. The Company does not undertake or agree to update this Presentation or to correct any inaccuracies in, or omissions from, this Presentation that may become apparent. No person has been authorized to give any information or make any representations other than those contained in this Presentation and, if given and/or made, such information or representations must not be relied upon as having been so authorized. The contents of this Presentation are not to be construed as legal, financial or tax advice.

Certain statements in this Presentation may constitute forward-looking information within the meaning of applicable securities laws. Generally, forward-looking information can be identified by the use of forward-looking terminology such as "expects," "believes," "anticipates," "budget," "scheduled," "estimates," "forecasts," "intends," "plans," and variations of such words and phrases, or by statements that certain actions, events or results "may," "will," "could," "would," or "might," "be taken," "occur," or "be achieved." Certain statements, beliefs and opinions in this Presentation (including those contained in graphs, tables and charts), which reflect the Company's or, as appropriate, the Company's directors' current expectations and projections about future events, constitute forward-looking information. Forward-looking information contained in this Presentation is based on certain assumptions regarding, among other things, the Company's holding of the Isenova Project on entry into a definitive option agreement, expected growth of gold exploration district in Finland, results of operations, performance, including drilling, industry trends and growth opportunities. While management considers these assumptions to be reasonable, based on information available, they may prove to be incorrect. By their nature, forward-looking statements involve a number of risks, uncertainties and assumptions that could cause actual results or events to differ materially from those expressed or implied by the forward-looking statements. These risks, uncertainties and other factors include, but are not limited to: (i) commodity prices; (ii) the willingness and ability of third parties to honor their contractual obligations; (iii) the decisions of third parties over which the Company has no control; (iv) environmental and government regulations; (v) availability of financing; (vi) judicial proceedings; (vii) force majeure events; (viii) risks associated with the Company's ability to operate in Finland; (ix) its ability to implement and fulfill its business strategies; (xi) general economic conditions; (xii) adverse industry events; (xiii) marketing costs; (xiv) loss of markets; (xv) future legislative and regulatory developments; (xvi) inability to access sufficient capital from internal and external sources, and/or inability to access sufficient capital on favourable terms; (xvii) income tax and regulatory matters; (xviii) the ability of the Company to implement its business strategies including expansion plans; (xix) competition; and (xx) changes in regulation. The foregoing factors are not intended to be exhaustive. These risks, uncertainties and assumptions could adversely affect the outcome and financial effects of the plans and events described herein. Forward-looking statements contained in this Presentation regarding past trends or activities should not be taken as a representation that such trends or activities will continue in the future. The Company does not undertake any obligation to update or revise any forward-looking statements, whether as a result of new information, future events or otherwise.

This Presentation does not constitute an offer to sell or the solicitation of an offer to buy, nor shall there be any sale of the securities of the Company in any jurisdiction in which such offer, solicitation or sale would be unlawful prior to registration or qualification under the securities laws of such jurisdiction. The securities of the Company have not been and will not be registered under the United States Securities Act of 1933, as amended (the "U.S. Securities Act"), or any state securities laws and may not be offered or sold within the United States, unless an exemption from such registration is available, information concerning the assets and operations of the Company included in this Presentation has been prepared in accordance with Canadian standards and is not comparable in all respects to similar information for United States companies.

No securities regulatory authority has expressed an opinion about these securities and it is an offence to claim otherwise.

Investor Highlights

Nordique Resources is a Canadian exploration company advancing high-potential gold opportunities, with a strategic mandate to build a diversified portfolio across prospective mineral belts.



Isoneva Project

Option to acquire 100% of the Isoneva Project in the underexplored Western Finland Gold Belt



Mining-Friendly Jurisdiction

Finland offers low risk, excellent infrastructure, and supportive regulatory policies



Previous Exploration

Baseline historical data at Isoneva provide a foundation for further work



High-Grade Gold Potential

- Isoneva is a drill-ready project with **gold-bearing boulder trains**
- Over 200 glacial boulders grading >1g/t Au, averaging **~14 g/t Au**, samples up to **462 g/t Au¹**
- Historical drill results up to **4.3 g/t Au over 17.9 m**, and **54 g/t Au over 0.41 m²**



Upcoming Catalysts

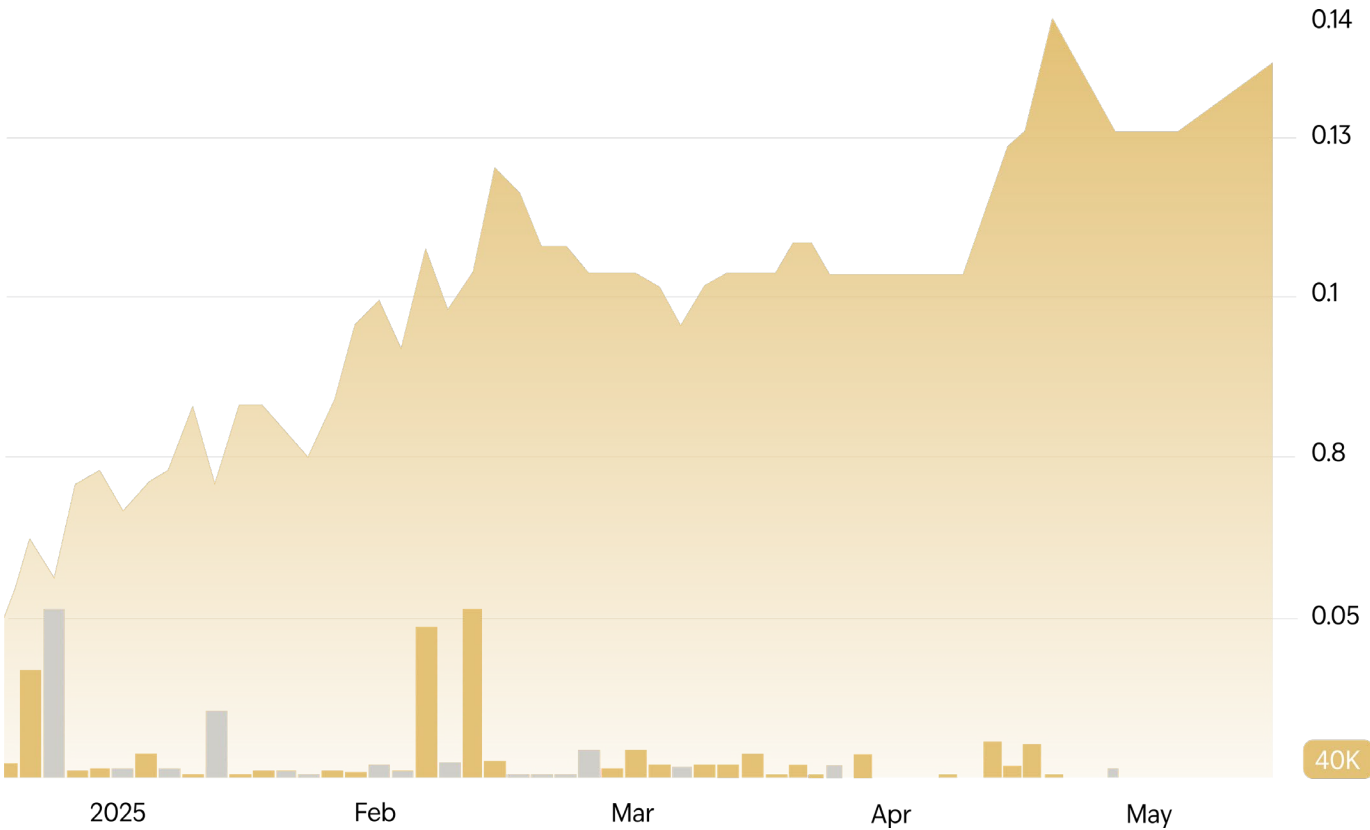
Drill-ready targets with phased work program planned to unlock value

Capital Structure

Shares Outstanding	35,617,248
Market Capitalization	\$5 M CAD (\$0.14)
Options	2,500,000
RSUs	4,200,000
Warrants	24,471,428
Fully Diluted	66,788,676

Capital Structure as of May 20, 2025

CSE: NORD



Management & Directors

Sharyn Alexander

CEO

Ms. Alexander has a 20-year background in the mining and mineral exploration industry. She specializes in business development, marketing and corporate communications, with a proven track record in raising capital for exploration. Past roles include President of Sun Summit Minerals and technical positions with B2Gold, Barrick, and SRK Consulting.

Damion Carruel

Director

Mr. Carruel has over 30 years of experience in financial markets, spanning stockbroking, futures trading, and equity markets. Since 2014, he has led financing efforts for multiple IPOs on the London Stock Exchange, leveraging his deep expertise in corporate broking, investor relations, and equity markets.

Clayton Fisher

Director

Mr. Fisher has over 15 years in the capital markets sector and has played pivotal roles as CEO, director, and strategic advisor for both private and public corporations, with a focus on advancing mining ventures. Clayton holds a degree in Economics and Finance from the University of Victoria.

Jeremy Woodgate

Director

Mr. Woodgate has over 15 years of experience in capital markets, specializing in financing junior resource companies. He was Head of Trading and Partner at Pareto Securities (formally Ocean Equities) and founded his own broking firm, Smaller Company Capital. He currently sits on several boards across the mining, technology, and sports sectors.

Bernhard Klein

Director

Mr. Klein is a Professor of Mineral Processing and previous Head of Mining Engineering at the Norman B. Keevil Institute at the University of British Columbia. He has 35 years of experience in design and improvement within industry and academia, as well as experience as a director of junior exploration companies.

Steven Nguyen

CFO

Mr. Nguyen is a Chartered Professional Accountant with extensive experience supporting private and public companies junior mining and other resource-focused sectors. He specializes in financial reporting, audit readiness, and corporate compliance, with a strong track record guiding companies through IPOs and RTOs.

David Hladky

Technical Advisor

Mr. Hladky is a Professional Geologist (registered in Alberta) with over 25 years of hands-on experience in Canada and Internationally, including in the US, Mexico, Brazil, Argentina and Peru. Recently, he has been working as a consultant for projects in Nevada, Ontario and Mexico.

Dr. Toby Strauss

Qualified Person

Dr. Toby Strauss (Ph.D.; CGeol.; EurGeol.) has over 25 years of experience, including over 20 years of experience operating in Finland, with a successful track record of new gold discoveries. Currently COO and Director of Gemdale Gold and geologist at Merlyn Consulting. Formerly COO of Belvedere Resources.

Why Finland?

- **Top-ranked mining jurisdiction** with low political risk*
- **Stable, mining-friendly** regulatory framework
- **Excellent infrastructure** including roads, rail, air, and power
- **Prolific geological terrain** prospective for gold, base metals, battery metals and critical minerals
- Presence of major operators such as **Agnico Eagle** (Kittilä) and **Rupert Resources** (Ikkari)

Central Finland

- **Underexplored terrain** with significant discovery potential
- **History of resource development**, faster permitting timelines

* Finland consistently ranks as a top global jurisdiction for mining investment, Fraser Institute Annual Survey of Mining Companies:
<https://www.fraserinstitute.org/studies/annual-survey-of-mining-companies-2023>



Western Finland Gold Belt

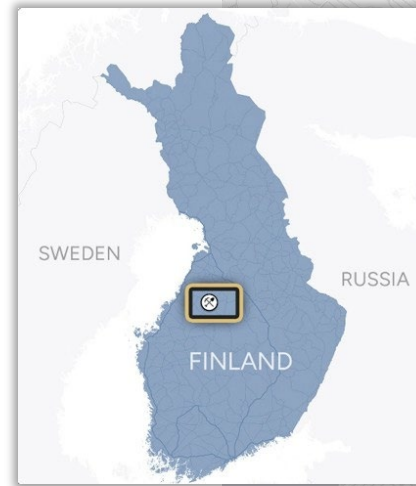
- **Emerging gold district** with limited historic gold exploration
- **Active and past mining operations** support development potential
- Geological belt is **similar in age and structure to other Proterozoic-age greenstone-hosted gold regions***
- **Exploration activity increasing**, with both junior and majors active in the region

ISONEVA PROJECT

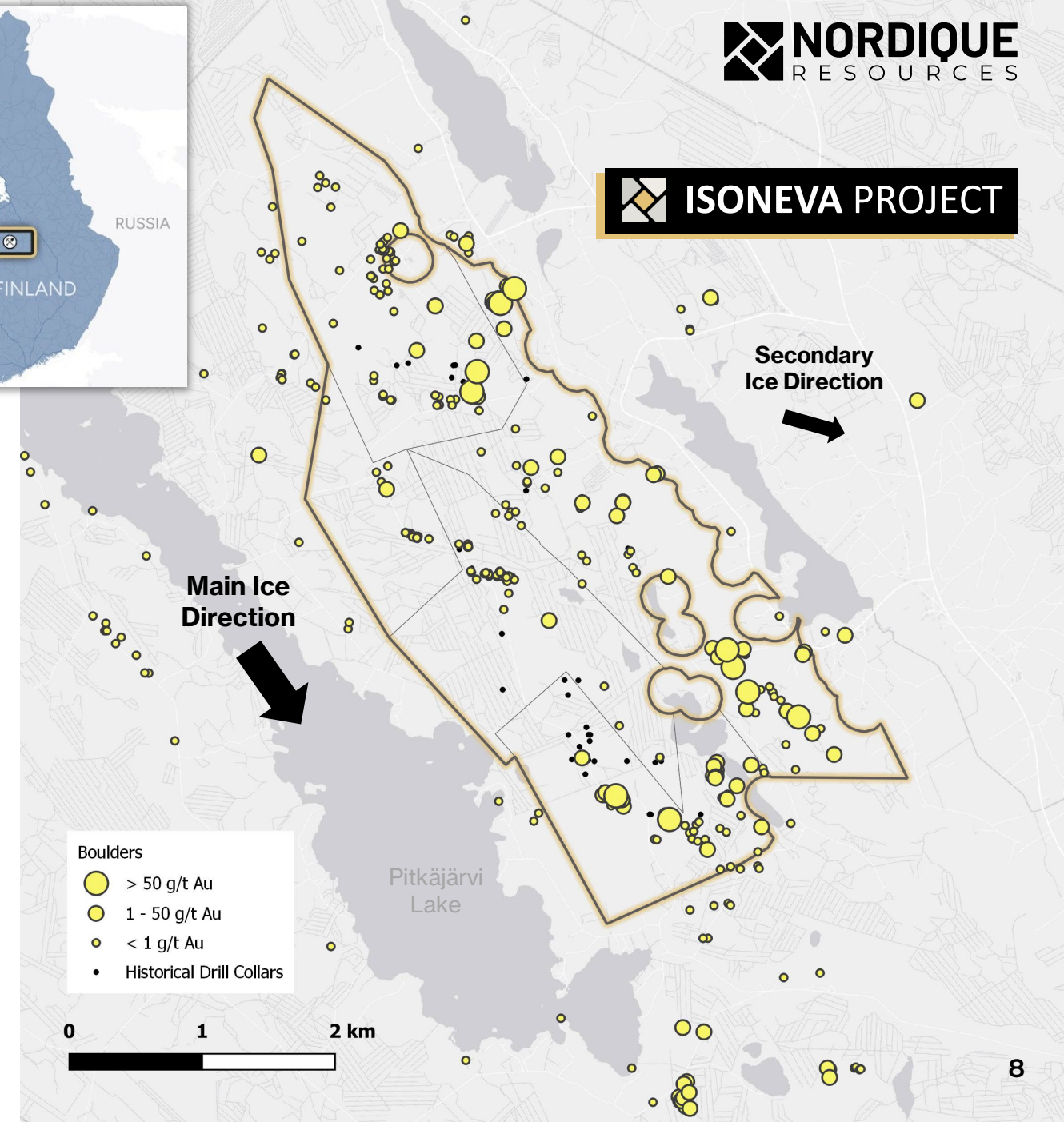


Isonева Project Overview

- 11 km² (1,100 ha) early-stage gold exploration property within the **Western Finland Gold Belt** (Middle Ostrobothnia)
- Over 200 gold-bearing boulders sampled >1 g/t Au, **averaging ~14 g/t Au; highest grade sample reported at 462 g/t Au¹**
- Multiple boulder trains interpreted to be **locally sourced from mineralized shear zones**
- **Historical drill results** include up to:
 - **17.9 m of 4.3 g/t Au** (ISON004)²
 - **0.41m of 54 g/t Au** (ISON014)²
- Area is **underexplored due to glacial till cover**; limited bedrock exposure



ISONEVA PROJECT

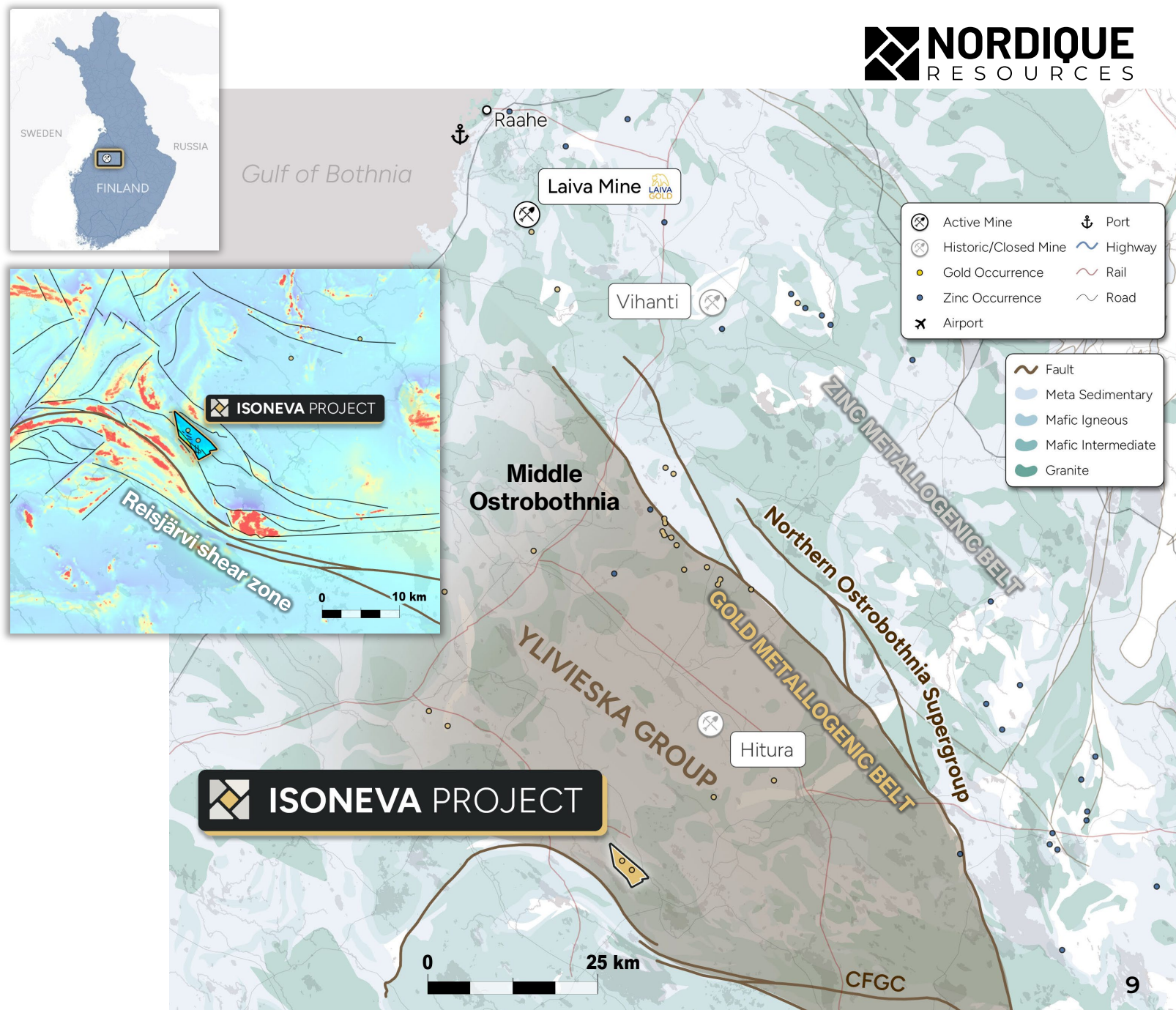


¹ See point (1) on Slide 18, Technical Disclaimers & References

² See point (2) on Slide 18, Technical Disclaimers & References

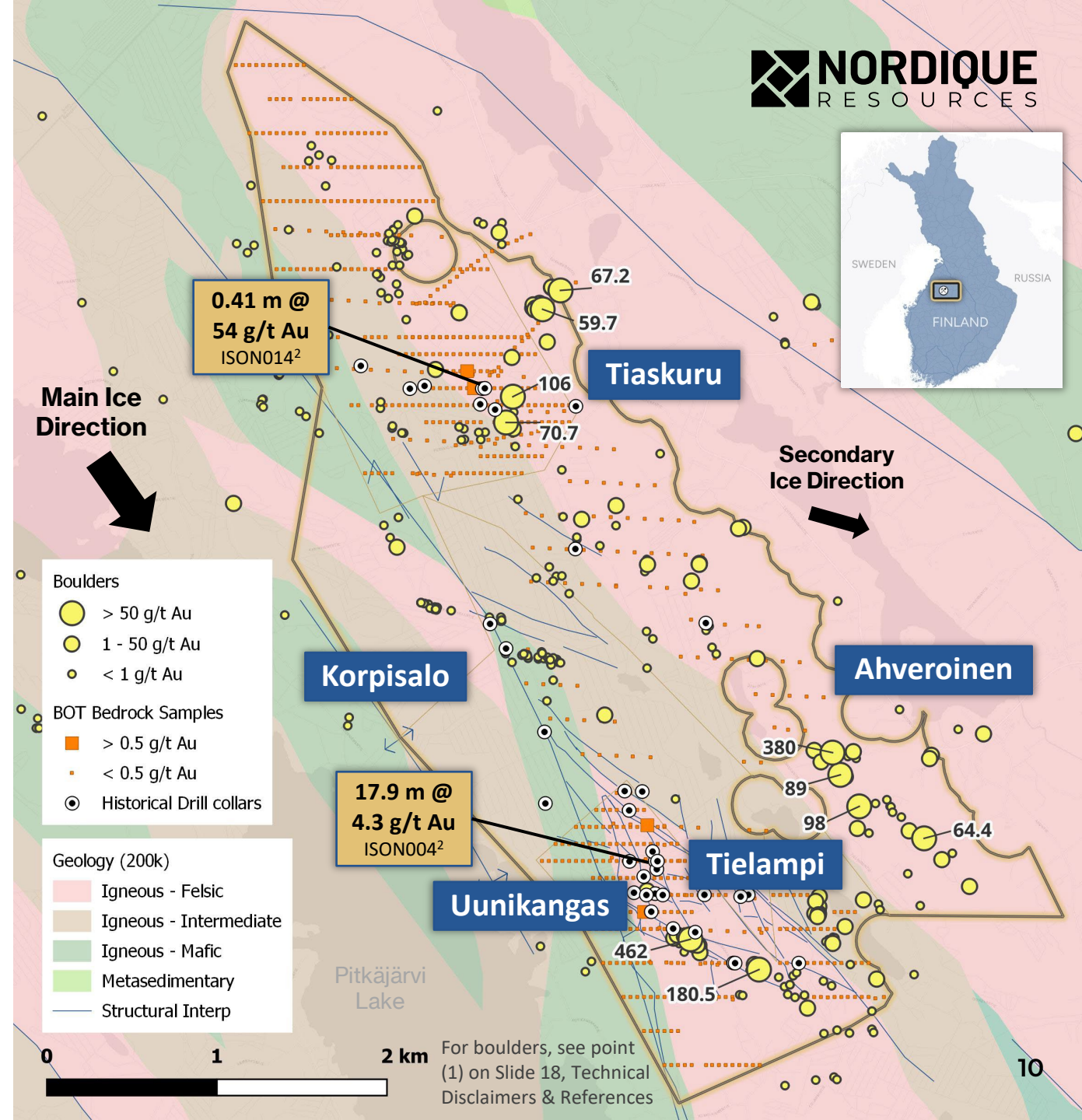
Exploration History & Geological Setting

- **Sporadic exploration on the property** since the mid 1980s (Outokumpu)
- **Boulder tracing, Base-of-Till (BOT) sampling, and geophysics critical** due to low outcrop (<1%)
- **Modern exploration tools** (BOT, IP, structural mapping) effective to track boulder train sources
- **Boulder trains align with structural, geochemical, and geophysical anomalies** supporting a nearby bedrock source
- **6.7 km contact zone** between intrusive diorite & volcanic sequences
- Hosted along on a **second-order structure off a major crustal suture** (Reisjärvi shear zone)



High-Priority Target Areas

- **Drill-ready target areas have been identified** through geophysics, till and boulder anomalies, and historic drilling:
 - **Uunikangas** Structurally hosted gold-bearing shear zones
 - **Tiaskuru** Dilational structure with high-grade veins
 - **Korpisalo** Strong sulphidic till train & IP anomaly
 - **Ahveroinen** Historic high-grade boulder samples
 - **Tielampi** Untested gold-bearing boulders
- **Two primary target styles:**
 - **High-grade veining in dilation zones along lithological contacts** (e.g., Tiaskuru)
 - **Sulphide-rich structural corridors** (e.g., Korpisalo)
- Historical exploration was mainly focused **down-ice** of the strongest till and boulder anomalism
- **Prospective areas remain unexplored and undrilled**; warrant further investigation



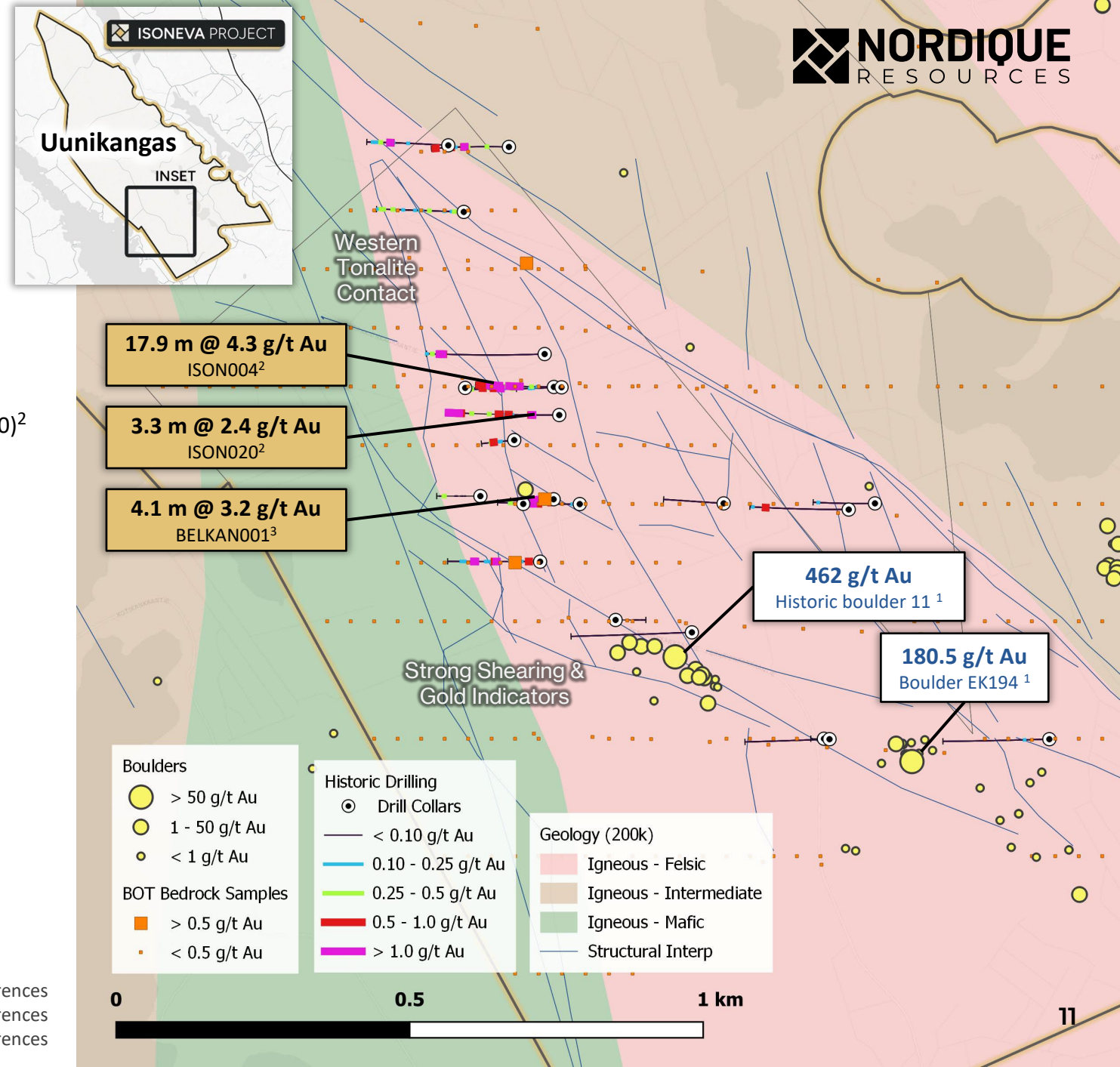
Uunikangas - High-Priority Target

- Multiple drill intercepts confirm structurally controlled gold-bearing shear zones
- Significant drill intercepts:
 - 17.9 m of 4.3 g/t Au and 12.1 g/t Ag from 147.2 m, including 2.1 m of 24.8 g/t Au and 77.6 g/t Ag from 158.5 m (ISON004)²
 - 3.3 m @ 2.4 g/t Au and 1.1 g/t Ag from 61.8 m (ISON020)²
 - 4.1 m @ 3.2 g/t Au and 21.8 g/t Ag from 55.1 m (BelKan001)³
- Boulder samples up to:
 - 462 g/t Au (historic boulder 11)¹
 - 180.5 g/t Au (sample EK194)¹
- Anomalous Base-of-Till (BOT) bedrock and till sample mineralization present
- Western tonalite contact remains untested – high-priority for follow-up drilling
- Strong gold-in-till anomaly at the northern tip of the intrusion remains a key focus

¹ See point (1) on Slide 18, Technical Disclaimers & References

² See point (2) on Slide 18, Technical Disclaimers & References

³ See point (3) on Slide 18, Technical Disclaimers & References

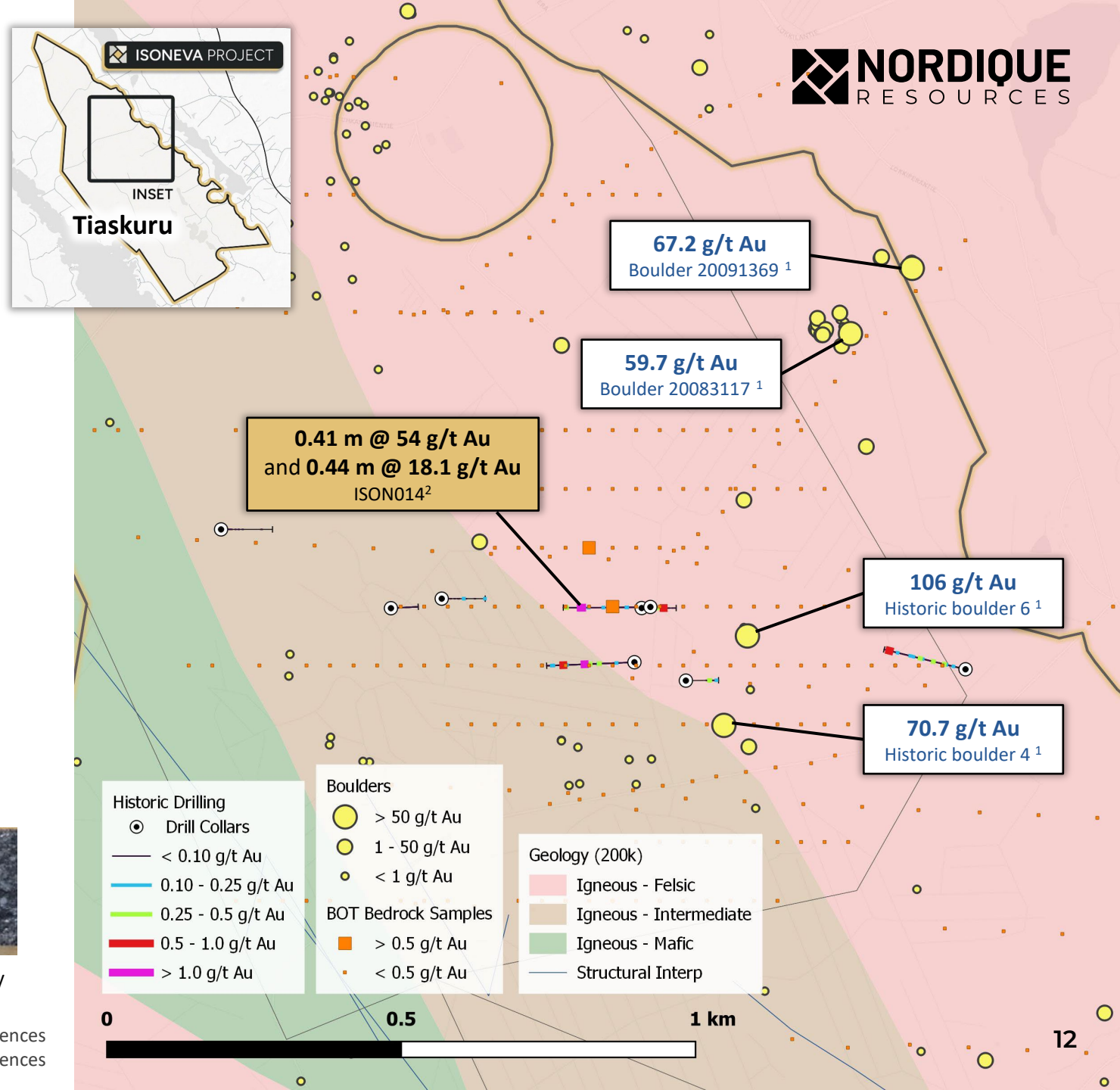


Tiaskuru - High-Priority Target

- Interpreted to host a **dilational structural zone with potential for high-grade veins**
- Significant drill intercepts (ISON014)²
 - 0.41 m of 54 g/t Au and 32.6 g/t Ag from 159.5 m**
 - 0.44 m of 18.1 g/t Au and 6.7 g/t Ag from 165.6 m**
- Boulder samples up to:
 - 106 g/t Au** (historic boulder 6)¹
 - 70.7 g/t Au** (historic boulder 4)¹
- Hosted in a **structurally complex area with high-grade quartz-carbonate-aspyn veins**
- Represents a new discovery** in the northern part of the property
- Mineralization open in all directions**; limited historical drilling conducted

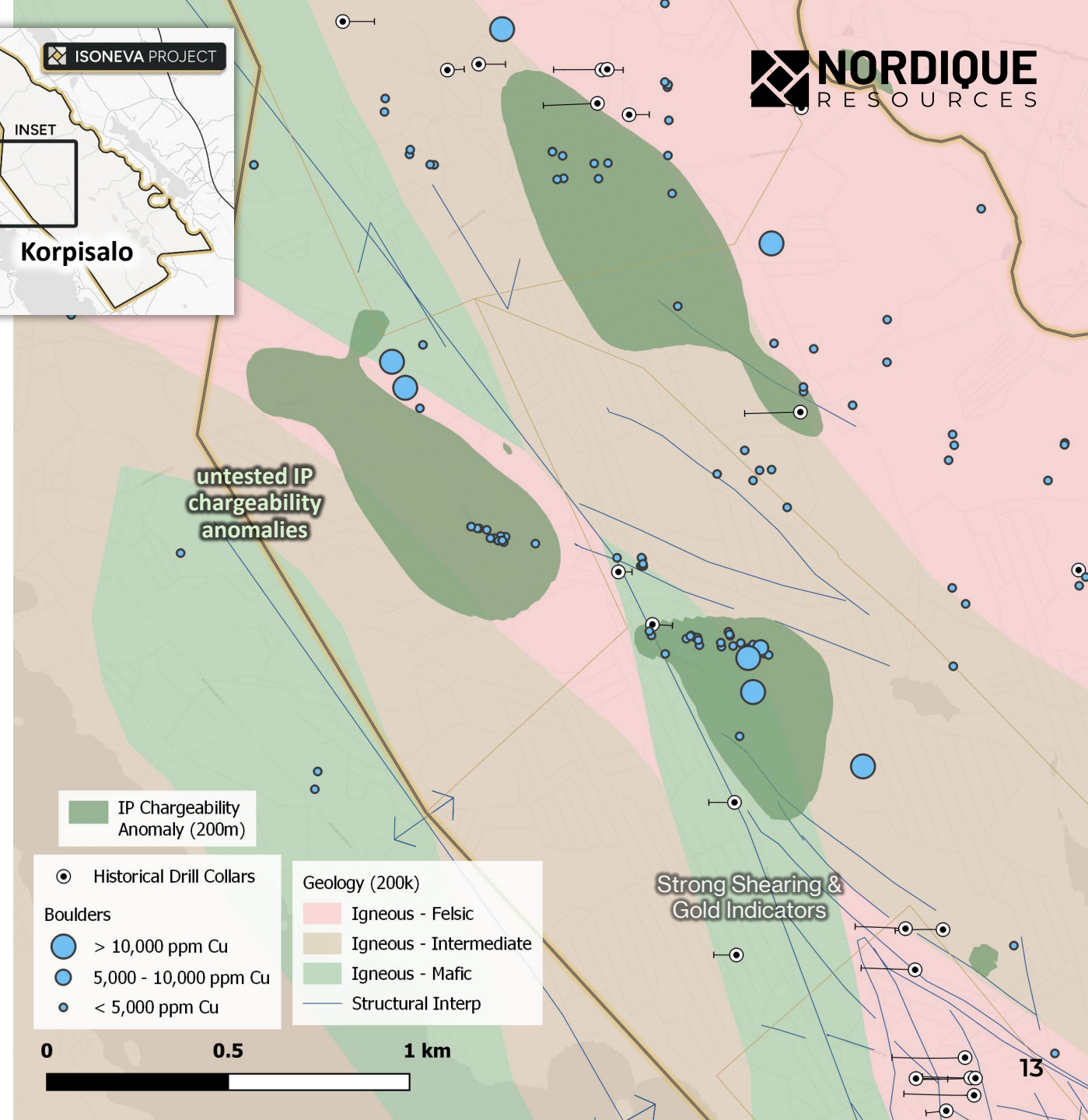
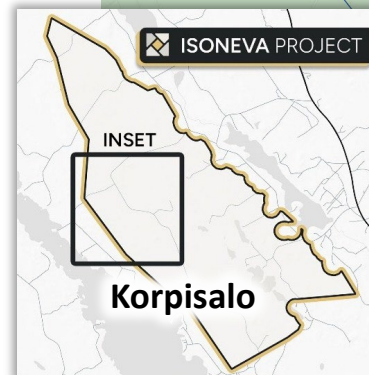


ISON014 162.56-163 m 18.1 g/t Au. Qtz vein in sheared feldspar amphibole porphyry



Korpisalo - High-Priority Target

- Defined by a **broad gold and copper anomalies** with a distinct down-ice sulphidic signature, suggesting the **presence of sulphide-rich mineralization in bedrock**
- Coincident with a **high-chargeability IP geophysical anomalies**, interpreted to reflect disseminated sulphides or veining at depth
- Located along a **structurally complex corridor**
- Target area **remains undrilled**
- Represents a **high-priority, under-explored target with strong discovery potential**



Milestones & Catalysts

PLANNED ISONEVA EXPLORATION PROGRAM

(Pending Definitive Agreement)



Expand bedrock and Base-of-Till (BOT) sampling to refine drill targets



Follow-up diamond drilling program planned to test high-priority targets



Systematic exploration approach to uncovering the boulder train sources



Strong discovery potential with modest exploration budget

NEAR-TERM CATALYSTS

**Q3
2025**

Detailed geological mapping and target refinement

**Q4
2025**

Initial winter drilling campaign

**Q1
2026**

Initial drill results and potential resource modelling

**Q2
2026**

Expansion drilling and follow-up exploration

Value Proposition



Project Portfolio

Multi-project strategy with current assets in Finland and British Columbia



Jurisdictional Advantage

Strong infrastructure, policy support, and permitting



Exploration Opportunity

Historical data highlights prospective target areas for follow-up work



Strategic Growth Potential

Ongoing evaluation of additional exploration opportunities in underexplored belts





Sharyn Alexander
Chief Executive Officer



Suite 1600-409 Granville Street
Vancouver, BC V6C 1T2



info@nordiqueresources.com



1 (778) 650-3003



Technical Disclaimers & References

Qualified Person and NI 43-101 Disclosure

Dr. Toby Strauss (CGeol.; EurGeol.), Director of Gemdale Gold Inc, is the Qualified Person as defined by National Instrument 43-101. Dr Strauss has verified the data supporting this presentation. For the Exploration Information relating to the drillholes, verification has included: checking a proportion of the reported assays against the issued laboratory certificates; reviewing the QA/QC results of the assay workorders; reviewing drill logs and visually verifying sample depths against drill core photographs for drillcore for the ISONxxx drillholes. Boulder samples have been compiled from two sources: 1) Gemdale File = Boulder samples collected by Gemdale Gold Inc or previous operators that were sent for assay, and laboratory reports are available; and 2) Online, freely accessible data file provided the Geological Survey of Finland relating to Layman Samples that have been submitted for assay. Verification for the Gemdale boulder files includes checking a proportion of the reported assays in the Company database against the issued laboratory assay certificates. No verification has been conducted on the Layman Sample database. Dr Strauss is responsible for the accuracy of and has approved the technical information contained in this presentation.

QA/QC and Core Sampling Protocols

Gemdale Gold Inc. ("Gemdale") is responsible for QA/QC in respect of its drill core. Nordique Resources Inc. has been advised of the following procedures and protocols utilized by Gemdale in respect of the same. For the ISONxxx drillholes, drill core is logged and sampled in a secure core storage facility located in Ylivieska, Finland. Core samples from the program are cut in half, using a diamond cutting saw, and are sent to ALS Global, Outokumpu, an international accredited mineral analysis laboratory, for sample prep and analysis. All samples are analyzed for gold using Fire Assay-AA techniques (method Au-AA23). Samples returning over 10.0 g/t gold are analyzed utilizing Fire Assay-Gravimetric methods (gold-GRA21). As part of the Company's quality control/quality assurance program (QA/QC), certified gold reference standards are routinely inserted into the sample stream every 20th sample (5%). A blank sample is also inserted into the sample stream with every batch sent to the laboratory. No QAQC issues were noted with the results reported herein. Similar protocols were followed for the BELKANxxx holes, except that gold was assayed using method Au-AA25 which has a slightly different range of detection limits to Au-AA23. No QAQC issues were noted with the results reported herein.

References

- (1) Boulder samples have been compiled from two sources: Boulder samples collected by Gemdale Gold Inc or previous operators that were sent for assay, and laboratory reports are available; and online, freely accessible data file provided the Geological Survey of Finland relating to Layman Samples that have been submitted for assay. Readers are cautioned that boulder sampling is selective by nature and the results provided above are not necessarily representative of mineralization hosted at the Isonvea Property.
- (2) Nordique Resources press release dated **May 22, 2025**. First reported in Gemdale press releases dated **November 10, 2021**, and **January 6, 2022**. Bulk intersections are reported at a cutoff grade of 0.3 g/t gold with maximum 5 m internal dilution. Orientation of mineralisation in drillholes is unclear. True widths are estimated as 65-85% of downhole intersect length.
- (3) Nordique Resources press release dated **May 22, 2025**. First reported in Belvedere Resources Ltd press release dated **August 1, 2012**.
- (4) Koffyberg (2019) 43-101 Technical Report on the Fairview Property. Gold Lion Resources Inc.